

TRANSPORTING TROPHY MOUNTS WORLDWIDE

TRANSPORTING TROPHY MOUNTS WORLDWIDE



*The Premiere Big Game Shipping Experts*

TROPHY TRANSPORT



*The Premiere Big Game Shipping Experts*

*In October 2004, my son Kane and I traveled to Sheridan, WY on a trophy mule deer hunt with Cole Benton of Grizzly Outfitters. On the first day of the season we harvested a 150 Class trophy Mule Deer with one shot at 300+ yards in a sage brush draw. My son and I were together when the opportunity presented itself and he was actually in the back of the guide's pickup watching the stalk with binoculars. I have never had a more memorable hunt.*

*We left the trophy with a local taxidermist and when the mount was completed I contacted Kyle Kesselring of Trophy Transport to get the prize shipped home unscathed. Kyle set up the arrangements and had the trophy picked up at the taxidermist studio and air freighted to Pittsburgh International Airport. When the deer arrived in Pittsburgh, Kyle had the ground transport person uncrate and inspect it for damage or broken tines while he talked to him on the cell phone. The trophy arrived late that night at a friend's residence on Deep Creek Lake Maryland as we are constructing a new residence and do not currently have a permanent address.*

*The big buck has found a permanent place in our memories and in our home. My gratitude to the folks at Trophy Transport for getting the invaluable mule deer home safely! In addition, I was contacted numerous times during the time the trophy was being moved by Trophy Transport to be made aware of the big guy's status! What customer service! You guys are phenomenal!*

*Mark Tonkovich*



**TROPHY TRANSPORT™** An Innovative Transportation Solutions Inc. Company

8510 Rosedale Drive, Oak Ridge, North Carolina 27310

toll free: 877-644-9757 • local: 336-644-9757 / toll free fax: 888-644-9762 • local fax: 336-644-9761

[www.TrophyTransport.com](http://www.TrophyTransport.com)

# We're Hunters, Fishermen and Logistics Experts... So, who better to handle all your big game trophy shipments?

The Trophy Transport Team, made up of avid outdoor sportsmen with over 20 years of global logistics experience, truly understands the value you place on getting your trophy safely to its destination. We provide specialty logistics and shipping solutions worldwide— from the taxidermist to your trophy room, our expert team sweats the details so you can focus on what you do best. Our services range from domestic & international shipping of mounts, capes and perishables to expert crating and white-glove services that include inside delivery and the removal of all crating materials.



## Why choose Trophy Transport to handle your shipping?

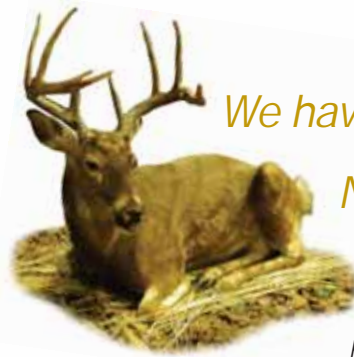
**Taxidermists...** You are an artist. Your customers come to you because of the knowledge and skills you possess that go into the recreation of their trophy game not because you build an awesome crate or because of your established shipping network.

**Outfitters...** You are an expert at finding the game you may even have an in-house taxidermist. But your customers come to you because of the knowledge and skills you possess that go into making their pursuit of trophy game successful

**Hunters & Fishermen...** Your time is precious and when you find some extra time you'd rather be outdoors in hot pursuit of some trophy game. You invest big in airline tickets, guide fees, special equipment and taxidermy fees, not to mention the time away from work and family so, you harvest that trophy of a lifetime now what? Call the folks at Trophy Transport to handle this most prized trophy.

Our team has been there, relying on common carriers, only to finally receive our mounts unprofessionally crated, filthy from being shipped with other freight or even worse, the nightmare of all sportsman, broken antlers and torn capes.

And that's the beauty of Trophy Transport we do think about how to build the best crate for your mount and we do have an established network of shipping options that will safely get your mount home besides, wouldn't you really love to have more time to focus on what's important to you?



## We have the right shipping solution for you... No matter where in the world you are.

**Domestic Shipments** in and to the 48 contiguous states plus Alaska, Hawaii and Puerto Rico.

- **Same Day Solution** for top priority shipments that must be picked up and delivered the same day.
- **Next Day Solution** for priority shipments that must be picked up and arrive overnight on the next business day.
- **Second Day Solution** for shipments that must be picked up & delivered in 2 business days anywhere in the United States.
- **Standard Solution** for shipments that must be picked up and delivered within 3 - 5 business days.

**International Shipments** **DON'T LET INTERNATIONAL SHIPPING INTIMIDATE YOU!** The experts at Trophy Transport will take care of all the details. We do it all the time! We provide International delivery services to all pick up and delivery locations that do not meet the requirements for domestic deliveries. Trophy Transport's experienced representatives provide smooth pick up and transport of your trophy mounts anywhere in the world. These services include but are not limited to:

- **Priority Air Solution** allows your shipments to be expedited overseas on a next day departure flight.
- **Standard Air Solution** provides a more economical solution for overseas shipments and will depart twice a week on a consolidated basis.
- **Ocean Shipments** via full container or less-than-container options.



## We make it real easy to do business with us...

**Premium Delivery Services**  
Our exclusive, Premium Delivery Services take the shipping of your mount to a new level of service by providing various special accommodations not found with most shipping companies. These services, available on both Domestic and International shipments, were developed with total care in mind and include:

- Custom Crating Solutions
- Lift Gate Solutions
- Two Man Delivery Solutions
- Inside Delivery Solutions
- Added Protection Solutions

## Shipment Tracking

At the time you place your orders to ship, you will be given an Estimated Time of Departure (ETD) and an Estimated Time of Arrival (ETA). Trophy Transport monitors the progress of all shipments several times a day, so if it appears that there may be a delay in either pick-up or delivery, a Trophy Transport Representative will notify you immediately. Remember, Trophy Transport knows how you feel about your trophies, so if you're getting a little nervous, feel free to give us a call anytime you may have a concern and we'll tell you exactly where your trophy is at that time.



## Easy Online Quote Requests...

You can access our services on the web or if you prefer, just give us a Toll Free call and we'll take all your information over the phone and send you a quote via fax or by mail. Our online **Trophy Room** offers our customers a great opportunity to show off their own trophies. Just send us a field shot, one of the completed mounts hanging in your favorite room and a brief description and we'll post it on our site for the whole world to see. **★ Shipping Procedures** We provide you with easy-to-understand instructions that insure all your information is precisely gathered and that your mount will safely reach its destination.



[www.TrophyTransport.com](http://www.TrophyTransport.com)